

JUNCTION BOXES

EExe - Increased Safety & Weatherproof

JB10 & JB11 Ranges



Introduction

These GRP terminal boxes have been designed for use in hazardous and hostile environments.

The robust design, coupled with corrosion-free GRP and high ingress protection, ensure a long life, low maintenance product.

- ★ Zone 1 & 2 use.
 - ★ EExe II T3, 4, 5 & 6.
 - ★ CENELEC approved.
 - ★ BASEEFA certified.
 - ★ IP66 & IP67.
 - ★ *Certified temperature -55°C to +125°C.
 - ★ GRP.
 - ★ Lightweight.
 - ★ Robust.
 - ★ Corrosion free.
 - ★ Retained cover screws.
 - ★ Optional gland continuity plate.
 - ★ Optional internal conductive coating.
 - ★ Variety of colours available.
 - ★ Optional L.E.D.
 - ★ Mixed rail mounted terminals.
- *Depending on version.

MEDC Ltd, Colliery Road,
Pinxton, Nottingham NG16 6JF, UK.
Tel: +44 (0)1773 864100
Fax: +44 (0)1773 582800

MEDC International, 4606 FM 1960 West,
Suite 437, Houston, Texas 77069, USA.
Tel: +1 (281) 315-8875
Fax: +1 (281) 315-8877

MEDC Norway, Børehaugen 3,
4006, Stavanger, Norge.
Tel: +47 51 91 75 80
Fax: +47 51 91 75 89

Sales Enq. Fax: +44 (0)1773 582830 Sales Orders Fax: +44 (0)1773 582832
E-Mail: sales@medc.com Web: www.medc.com



Specification

Certification: BASEEFA EExe II T4, 5 & 6.
EExem II T4, 5 & 6 (LED version).
BS5501 Parts 1, 6 & 8.
Certificate No. Ex94C3333/1X.
Cenelec EN50014, EN50019 & EN50028.

Material: Glass reinforced polyester (anti-static) stainless steel cover screws.

Finish: Self coloured black or epoxy painted to customer's specification.

Weight: JB10, 1.1 Kg. average.
JB 11, 1.8 Kg. average.

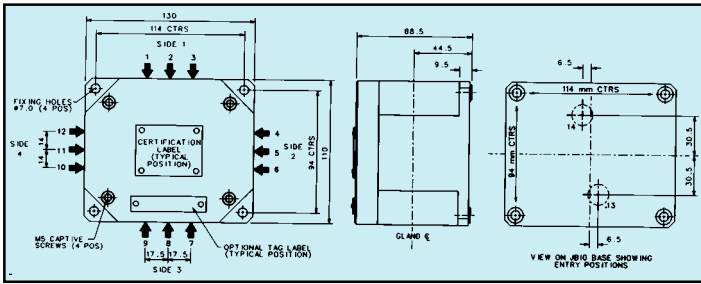
Certified Temperature: Standard -20°C to +55°C.
Optional -55°C to +55°C (MK6/6 only).
Optional -55°C to +125°C (SAKK 4 only).

Ingress Protection: IP66 & IP67.

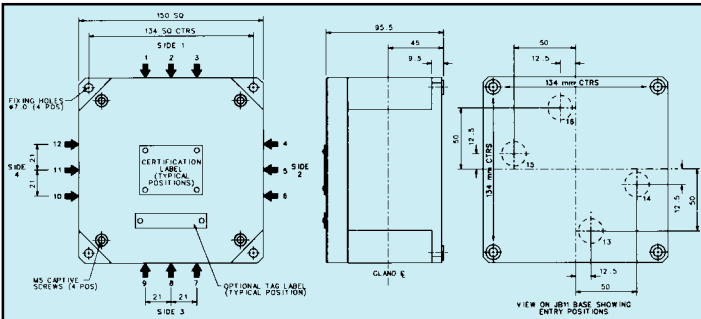
Gland Continuity: Via an internal plate.

Terminal Type/Size	Max No. of Terminals		Max Voltage	Max Current	T Rating
	JB10	JB11			
SAK 2.5	12	18	550	15	T4
SAK 4	10	16	550	21	T4
SAK 6N	8	13	550	26	T4
SAK 10	5	9	550	37	T4
SAK 16	-	8	550	47	T4
HTB4/HTB6	1	1	550	37	T6
BTB4/BTB6	1	1	JB10=500 JB11=600	37	T6
MK6/6	1	-	418	26	T5
BK6	1	-	275	21	T5
UK 2.5 B-Ex	11	17	418	15	T4
UK 4-Ex	9	15	418	21	T4
UK 10-Ex	7	12	418	37	T4
UK 16-Ex	5	8	418	47	T4
AKZ 2.5	12	20	60	15	T4
SAKK 4	-	13	550	21	T3

All Junction Boxes will be supplied with an internal earth terminal appropriate to the terminals fitted.
If more than one internal earth terminal is required the maximum number of feed-through terminals must be reduced.



JB10



JB11

JB10 GLAND DETAILS

GLAND ENTRIES	Maximum No. of Gland Entries Sides 1 & 3	Maximum No. of Gland Entries Sides 2 & 4		Maximum No. of Gland Entries (Base) With or Without Earth Continuity
	With or Without Earth Continuity	With Earth Continuity	Without Earth Continuity	
M16	2	2	2	2
M20 'O'	2	1	2	2
M20 'A'	2	1	1	2
M25	1	1	1	N/A
M32	1	1	1	N/A

JB11 GLAND DETAILS

GLAND ENTRIES	Maximum No. of Gland Entries per Side With or Without Earth Continuity	Maximum No. of Gland Entries (Base) With or Without Earth Continuity
M16	2	4
M20 'O'	2	4
M20 'A'	2	4
M25	2	N/A
M32	1	N/A

Ordering Requirements

The following code is designed to help in the selection of the correct unit. Build up the reference number by inserting the code for each component into the appropriate box.

For standard products, available ex-stock, contact sales office for details.

Terminal Box	Terminals	External Earth	Gland Continuity	Features	Side Cable Entries	Tag Label	Special	Finish																																																																																																						
JB10 JB11	<table border="1"> <thead> <tr> <th>Type</th> <th>Code</th> </tr> </thead> <tbody> <tr><td>SAK 2.5</td><td>A*</td></tr> <tr><td>SAK 4</td><td>B*</td></tr> <tr><td>SAK 6N</td><td>C*</td></tr> <tr><td>SAK 10</td><td>D*</td></tr> <tr><td>SAK 16</td><td>E*</td></tr> <tr><td>HTB 4</td><td>F*</td></tr> <tr><td>HTB 6</td><td>G*</td></tr> <tr><td>BTB 4</td><td>H*</td></tr> <tr><td>BTB 6</td><td>I*</td></tr> <tr><td>MK6/6</td><td>J*</td></tr> <tr><td>BK6</td><td>K*</td></tr> <tr><td>UK 2.5 B-Ex</td><td>L*</td></tr> <tr><td>UK 4 -Ex</td><td>M*</td></tr> <tr><td>UK 10 -Ex</td><td>N*</td></tr> <tr><td>UK 16 -EX</td><td>O*</td></tr> <tr><td>AKZ 2.5</td><td>P*</td></tr> <tr><td>SAKK 4</td><td>Q*</td></tr> </tbody> </table>	Type	Code	SAK 2.5	A*	SAK 4	B*	SAK 6N	C*	SAK 10	D*	SAK 16	E*	HTB 4	F*	HTB 6	G*	BTB 4	H*	BTB 6	I*	MK6/6	J*	BK6	K*	UK 2.5 B-Ex	L*	UK 4 -Ex	M*	UK 10 -Ex	N*	UK 16 -EX	O*	AKZ 2.5	P*	SAKK 4	Q*	<table border="1"> <thead> <tr> <th>Type</th> <th>Code</th> </tr> </thead> <tbody> <tr><td>None</td><td>N</td></tr> <tr><td>ES0001 (6mm² cable max)</td><td>R*</td></tr> <tr><td>ES0003 (16mm² cable max)</td><td>S*</td></tr> </tbody> </table> <p>*Suffix with side, e.g.: R1 ES0001 x side 1</p>	Type	Code	None	N	ES0001 (6mm ² cable max)	R*	ES0003 (16mm ² cable max)	S*	<table border="1"> <thead> <tr> <th>Continuity</th> <th>Code</th> </tr> </thead> <tbody> <tr><td>None</td><td>N</td></tr> <tr><td>Yes</td><td>E</td></tr> </tbody> </table>	Continuity	Code	None	N	Yes	E	<table border="1"> <thead> <tr> <th>Type</th> <th>Code</th> </tr> </thead> <tbody> <tr><td>None</td><td>N</td></tr> <tr><td>LED</td><td>L</td></tr> <tr><td>Stainless Steel internal fittings</td><td>S</td></tr> <tr><td>Internal conductive coating</td><td>C</td></tr> </tbody> </table>	Type	Code	None	N	LED	L	Stainless Steel internal fittings	S	Internal conductive coating	C	<table border="1"> <thead> <tr> <th>Size</th> <th>Code</th> </tr> </thead> <tbody> <tr><td>None</td><td>N</td></tr> <tr><td>M16</td><td>*A</td></tr> <tr><td>M20</td><td>*B</td></tr> <tr><td>M25</td><td>*C</td></tr> <tr><td>M32</td><td>*D</td></tr> </tbody> </table> <p>*Prefix with cable entry position (see diagram above) e.g. 1A, 2A.</p>	Size	Code	None	N	M16	*A	M20	*B	M25	*C	M32	*D	<table border="1"> <thead> <tr> <th>Label</th> <th>Code</th> </tr> </thead> <tbody> <tr><td>None</td><td>N</td></tr> <tr><td>Yes</td><td>T</td></tr> <tr><td>Please specify</td><td></td></tr> </tbody> </table>	Label	Code	None	N	Yes	T	Please specify		<table border="1"> <thead> <tr> <th>Option</th> <th>Code</th> </tr> </thead> <tbody> <tr><td>None</td><td>N</td></tr> <tr><td>Extra Internal Earth</td><td>*W</td></tr> <tr><td>Cover Entry</td><td>*X</td></tr> <tr><td>Base Entry</td><td>*Y</td></tr> <tr><td>Counterbored Side Entries</td><td>*Z</td></tr> </tbody> </table> <p>*Please discuss your requirements with MEDC Application Engineers prior to ordering.</p>	Option	Code	None	N	Extra Internal Earth	*W	Cover Entry	*X	Base Entry	*Y	Counterbored Side Entries	*Z	<table border="1"> <thead> <tr> <th>Finish</th> <th>Code</th> </tr> </thead> <tbody> <tr><td>Natural (Black)</td><td>N</td></tr> <tr><td>Red</td><td>R</td></tr> <tr><td>Blue</td><td>B</td></tr> <tr><td>Other (specify)</td><td>S</td></tr> </tbody> </table>	Finish	Code	Natural (Black)	N	Red	R	Blue	B	Other (specify)	S
Type	Code																																																																																																													
SAK 2.5	A*																																																																																																													
SAK 4	B*																																																																																																													
SAK 6N	C*																																																																																																													
SAK 10	D*																																																																																																													
SAK 16	E*																																																																																																													
HTB 4	F*																																																																																																													
HTB 6	G*																																																																																																													
BTB 4	H*																																																																																																													
BTB 6	I*																																																																																																													
MK6/6	J*																																																																																																													
BK6	K*																																																																																																													
UK 2.5 B-Ex	L*																																																																																																													
UK 4 -Ex	M*																																																																																																													
UK 10 -Ex	N*																																																																																																													
UK 16 -EX	O*																																																																																																													
AKZ 2.5	P*																																																																																																													
SAKK 4	Q*																																																																																																													
Type	Code																																																																																																													
None	N																																																																																																													
ES0001 (6mm ² cable max)	R*																																																																																																													
ES0003 (16mm ² cable max)	S*																																																																																																													
Continuity	Code																																																																																																													
None	N																																																																																																													
Yes	E																																																																																																													
Type	Code																																																																																																													
None	N																																																																																																													
LED	L																																																																																																													
Stainless Steel internal fittings	S																																																																																																													
Internal conductive coating	C																																																																																																													
Size	Code																																																																																																													
None	N																																																																																																													
M16	*A																																																																																																													
M20	*B																																																																																																													
M25	*C																																																																																																													
M32	*D																																																																																																													
Label	Code																																																																																																													
None	N																																																																																																													
Yes	T																																																																																																													
Please specify																																																																																																														
Option	Code																																																																																																													
None	N																																																																																																													
Extra Internal Earth	*W																																																																																																													
Cover Entry	*X																																																																																																													
Base Entry	*Y																																																																																																													
Counterbored Side Entries	*Z																																																																																																													
Finish	Code																																																																																																													
Natural (Black)	N																																																																																																													
Red	R																																																																																																													
Blue	B																																																																																																													
Other (specify)	S																																																																																																													

*Suffix with number of terminals, e.g: B6 = 6 x SAK4
Please note: Mixed combinations of SAK or UK terminals can be supplied, e.g: 3 x SAK 2.5 & 4 x SAK 4.



All the above specifications, dimensions, weights and tolerances are nominal (typical) and MEDC reserve the right to vary all data without prior notice. No liability is accepted for any consequence of use.